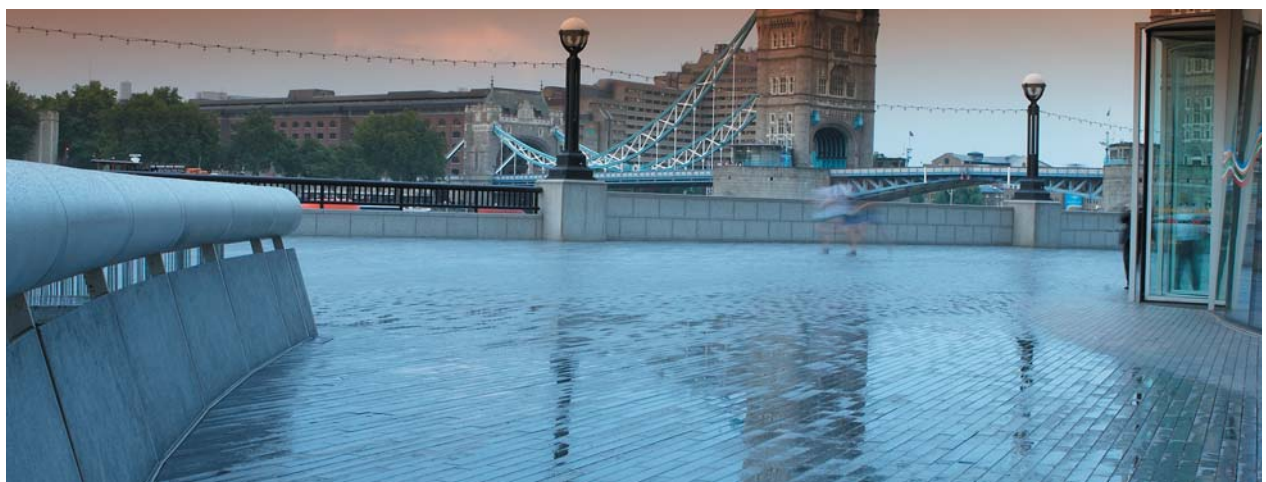




PRODUCT RANGE

GATIC[®]
SLOT DRAIN

Product Selector



Product Selector - Gatic PaveSlot

Gatic PaveSlot provides the perfect drainage solution for areas where paving materials have been specified. It provides a very neat, unobtrusive surface finish that enhances the appearance of the paving materials. The throat depth will accommodate all types of standard paving blocks, and the smooth wall enables paving to be laid directly up to the PaveSlot channel. Throat spacer perforations in the throat wall allow percolation of any subsurface water into the channel. It is designed for D400 Loading, making it suitable for all paved areas, including those that may routinely or occasionally be trafficked by delivery vehicles, service vehicles or buses.

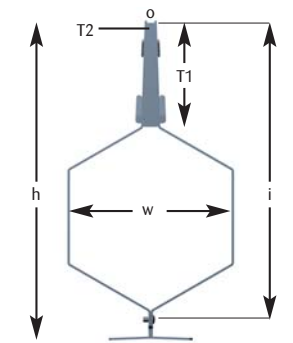


GATIC PAVESLOT

PAVESLOT CHANNELS

All Dimensions in mm.

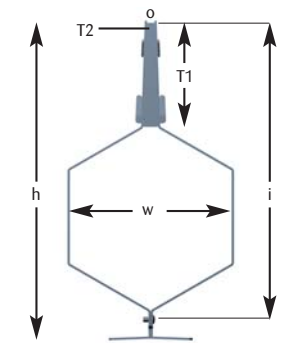
Code	Description	Load Rating	Length	Width (w)	Height (h)	Invert (i)	Throat Depth (T1)	Throat Width (T2)	Slot Orifice (o)	Intake Area/m	Weight Kg
S11305	100mm PaveSlot - 3m	D400	3000	100	252	211	98	10	10	10000	42
S11310	150mm PaveSlot - 3m	D400	3000	150	311	269	98	10	10	10000	55
S11315	225mm PaveSlot - 3m	D400	3000	225	445	404	148	10	10	10000	80
S11320	300mm PaveSlot - 3m	D400	3000	300	558	490	148	10	10	10000	100
S11325	400mm PaveSlot - 3m	D400	3000	400	666	606	148	10	10	10000	130
S11330	500mm PaveSlot - 3m	D400	3000	500	929	869	298	10	10	10000	176
S11335	600mm PaveSlot - 3m	D400	3000	600	1193	1133	298	10	10	10000	222



PAVESLOT SHORT CHANNELS

All Dimensions in mm.

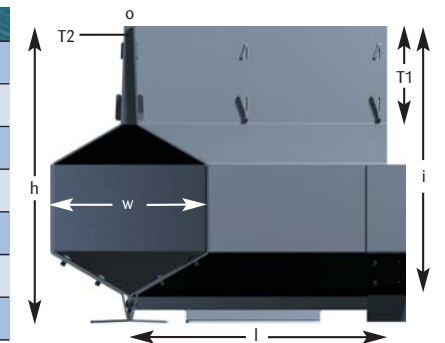
Code	Description	Load Rating	Length	Width (w)	Height (h)	Invert (i)	Throat Depth (T1)	Throat Width (T2)	Slot Orifice (o)	Intake Area/m	Weight Kg
S11505	100mm PaveSlot Short Channel - 500mm	D400	500	100	252	211	98	10	10	10000	7
S11510	150mm PaveSlot Short Channel - 500mm	D400	500	150	311	269	98	10	10	10000	9
S11515	225mm PaveSlot Short Channel - 500mm	D400	500	225	445	404	148	10	10	10000	13
S11520	300mm PaveSlot Short Channel - 500mm	D400	500	300	558	490	148	10	10	10000	16
S11525	400mm PaveSlot Short Channel - 500mm	D400	500	400	666	606	148	10	10	10000	22
S11530	500mm PaveSlot Short Channel - 500mm	D400	500	500	929	869	298	10	10	10000	29
S11535	600mm PaveSlot Short Channel - 500mm	D400	500	600	1193	1133	298	10	10	10000	37



PAVESLOT CORNER

All Dimensions in mm.

Code	Description	Load Rating	Length (l)	Width (w)	Height (h)	Invert (i)	Throat Depth (T1)	Throat Width (T2)	Slot Orifice (o)	Intake Area/m	Weight Kg
S11905	100mm PaveSlot Corner	D400	500	100	252	211	98	10	10	10000	14
S11910	150mm PaveSlot Corner	D400	500	150	311	269	98	10	10	10000	18
S11915	225mm PaveSlot Corner	D400	500	225	445	404	148	10	10	10000	26
S11920	300mm PaveSlot Corner	D400	500	300	558	490	148	10	10	10000	32
S11925	400mm PaveSlot Corner	D400	500	400	666	606	148	10	10	10000	44
S11930	500mm PaveSlot Corner	D400	500	500	929	869	298	10	10	10000	56
S11935	600mm PaveSlot Corner	D400	500	600	1193	1133	298	10	10	10000	74



Product Selector - Gatic UniSlot

Gatic UniSlot is a universal, general purpose drainage system, suitable for installation in any surface materials. It is the only Slotdrain system suitable for use in asphalt or tarmac surfaces, and offers the versatility to be effectively incorporated into any paved or concrete areas where medium duty performance is required.

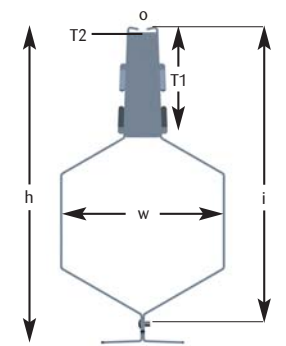
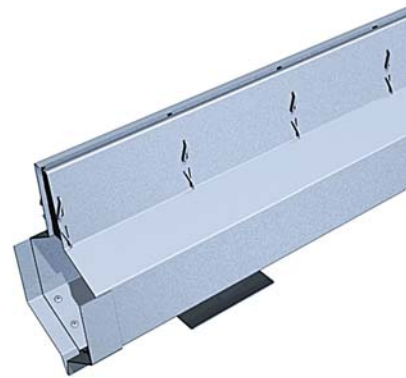


GATIC UNISLOT

UNISLOT CHANNELS

All Dimensions in mm.

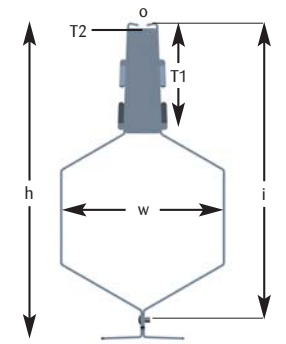
Code	Description	Load Rating		Length	Width (w)	Height (h)	Invert (i)	Throat Depth (T1)	Throat Width (T2)	Slot Orifice (o)	Intake Area/m	Weight Kg
		Surface Material										
		Asphalt	Concrete/Paving									
S12305	100mm UniSlot - 3m	C250	D400	3000	100	252	211	105	30	10	10000	29
S12310	150mm UniSlot - 3m	C250	D400	3000	150	311	269	105	30	10	10000	37
S12315	225mm UniSlot - 3m	C250	D400	3000	225	445	404	155	30	10	10000	55
S12320	300mm UniSlot - 3m	C250	D400	3000	300	558	490	155	30	10	10000	67
S12325	400mm UniSlot - 3m	C250	D400	3000	400	666	606	155	30	10	10000	130
S12330	500mm UniSlot - 3m	C250	D400	3000	500	929	869	305	30	10	10000	176
S12335	600mm UniSlot - 3m	C250	D400	3000	600	1193	1133	305	30	10	10000	222



UNISLOT SHORT CHANNELS

All Dimensions in mm.

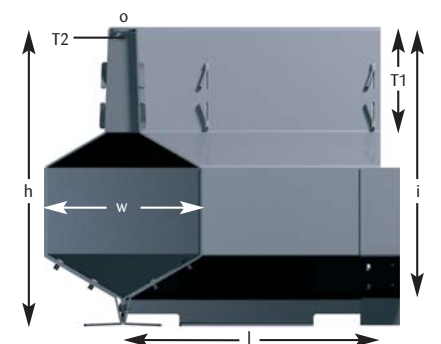
Code	Description	Load Rating		Length	Width (w)	Height (h)	Invert (i)	Throat Depth (T1)	Throat Width (T2)	Slot Orifice (o)	Intake Area/m	Weight Kg
		Surface Material										
		Asphalt	Concrete/Paving									
S12505	100mm UniSlot Short Channel - 500mm	C250	D400	500	100	252	211	105	30	10	10000	5
S12510	150mm UniSlot Short Channel - 500mm	C250	D400	500	150	311	269	105	30	10	10000	7
S12515	225mm UniSlot Short Channel - 500mm	C250	D400	500	225	445	404	155	30	10	10000	9
S12520	300mm UniSlot Short Channel - 500mm	C250	D400	500	300	558	490	155	30	10	10000	11
S12525	400mm UniSlot Short Channel - 500mm	C250	D400	500	400	666	606	155	30	10	10000	22
S12530	500mm UniSlot Short Channel - 500mm	C250	D400	500	500	929	869	305	30	10	10000	29
S12535	600mm UniSlot Short Channel - 500mm	C250	D400	500	600	1193	1133	305	30	10	10000	37



UNISLOT CORNER

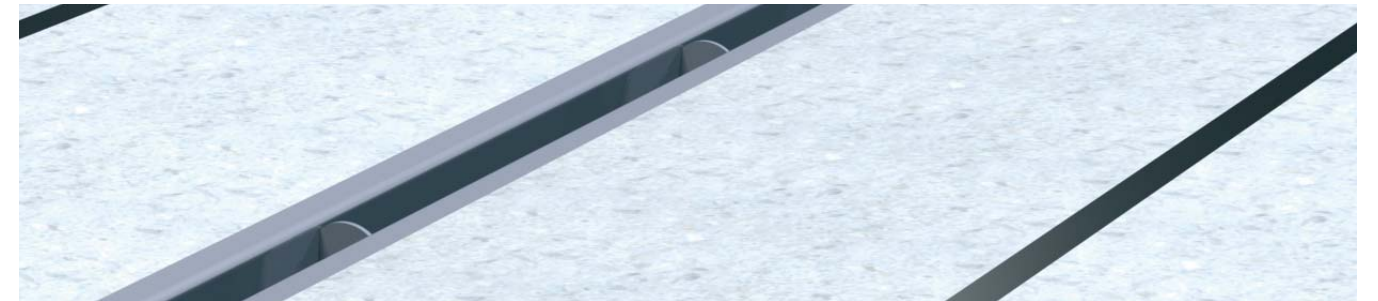
All Dimensions in mm.

Code	Description	Load Rating		Length (l)	Width (w)	Height (h)	Invert (i)	Throat Depth (T1)	Throat Width (T2)	Slot Orifice (o)	Intake Area/m	Weight Kg
		Surface Material										
		Asphalt	Concrete/Paving									
S12905	100mm UniSlot Corner	C250	D400	500	100	252	211	105	30	10	10000	10
S12910	150mm UniSlot Corner	C250	D400	500	150	311	269	105	30	10	10000	14
S12915	225mm UniSlot Corner	C250	D400	500	225	445	404	155	30	10	10000	18
S12920	300mm UniSlot Corner	C250	D400	500	300	558	490	155	30	10	10000	22
S12925	400mm UniSlot Corner	C250	D400	500	400	666	606	155	30	10	10000	44
S12930	500mm UniSlot Corner	C250	D400	500	500	929	869	305	30	10	10000	56
S12935	600mm UniSlot Corner	C250	D400	500	600	1193	1133	305	30	10	10000	74



Product Selector - Gatic UltraSlot

Gatic UltraSlot provides the ultimate drainage solution for ultra heavy duty loading and traffic environments. The deeper throat section ensures that a sufficient depth of concrete covers the main body of the channel, whilst the outward angle at the top of the throat provides a robust protective shield over the aris of the adjoining concrete. The concrete anchor points provide the option for locating a single length of rebar along each side. Whilst UltraSlot units do not require additional reinforcement to meet the stated load ratings, the concrete anchors enable the channel to be properly tied into the concrete surround, ensuring that any thermal movement takes place at the appropriate expansion joint rather than at the interface between the Slotdrain and the adjoining concrete.



GATIC ULTRASLOT

ULTRASLOT CHANNELS

All Dimensions in mm.

Code	Description	Load Rating	Length	Width (w)	Height (h)	Invert (i)	Throat Depth (T1)	Throat Width (T2)	Slot Orifice (o)	Intake Area/m	Weight Kg
S13305	150mm UltraSlot - 3m	E600 & F900	3000	150	406	364	200	30	30	30000	71
S13310	225mm UltraSlot - 3m	E600 & F900	3000	225	492	450	200	30	30	30000	89
S13315	300mm UltraSlot - 3m	E600 & F900	3000	300	702	634	300	30	30	30000	124
S13320	400mm UltraSlot - 3m	E600 & F900	3000	400	810	750	300	30	30	30000	152
S13325	500mm UltraSlot - 3m	E600 & F900*	3000	500	926	866	300	30	30	30000	177
S13330	600mm UltraSlot - 3m	E600 & F900*	3000	600	1190	1129	300	30	30	30000	223
S12355	150mm UltraSlot Shallow Invert - 3m	D400	3000	150	311	269	104	30	30	30000	57



ULTRASLOT CHANNELS - TREADSAFE

All Dimensions in mm.

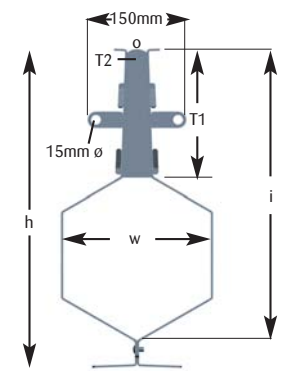
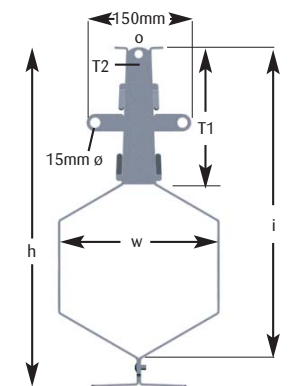
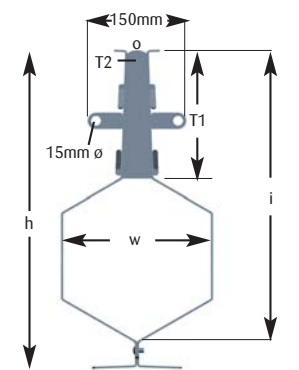
Code	Description	Load Rating	Length	Width (w)	Height (h)	Invert (i)	Throat Depth (T1)	Throat Width (T2)	Slot Orifice (o)	Intake Area/m	Weight Kg
S13355	150mm UltraSlot Treadsafe - 3m	E600 & F900	3000	150	406	364	200	30	2 x 9	18000	74
S13360	225mm UltraSlot Treadsafe - 3m	E600 & F900	3000	225	492	450	200	30	2 x 9	18000	92
S13365	300mm UltraSlot Treadsafe - 3m	E600 & F900	3000	300	702	634	300	30	2 x 9	18000	127
S13370	400mm UltraSlot Treadsafe - 3m	E600 & F900	3000	400	810	750	300	30	2 x 9	18000	155
S13375	500mm UltraSlot Treadsafe - 3m	E600 & F900*	3000	500	926	866	300	30	2 x 9	18000	180
S13380	600mm UltraSlot Treadsafe - 3m	E600 & F900*	3000	600	1190	1129	300	30	2 x 9	18000	226
S12360	150mm UltraSlot Treadsafe Shallow Invert - 3m	D400	3000	150	311	269	104	30	2 x 9	18000	60



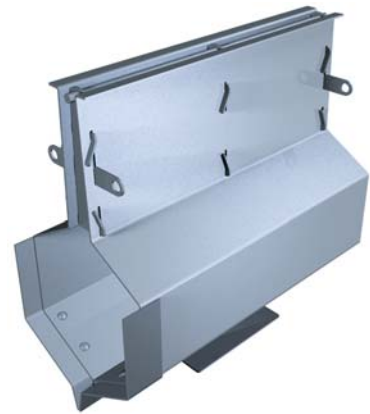
ULTRASLOT SHORT CHANNELS

All Dimensions in mm.

Code	Description	Load Rating	Length	Width (w)	Height (h)	Invert (i)	Throat Depth (T1)	Throat Width (T2)	Slot Orifice (o)	Intake Area/m	Weight Kg
S13505	150mm UltraSlot Short Channel - 500mm	E600 & F900	500	150	406	364	200	30	30	30000	10
S13510	225mm UltraSlot Short Channel - 500mm	E600 & F900	500	225	492	450	200	30	30	30000	14
S13515	300mm UltraSlot Short Channel - 500mm	E600 & F900	500	300	702	634	300	30	30	30000	21
S13520	400mm UltraSlot Short Channel - 500mm	E600 & F900	500	400	810	750	300	30	30	30000	25
S13525	500mm UltraSlot Short Channel - 500mm	E600 & F900*	500	500	926	866	300	30	30	30000	30
S13530	600mm UltraSlot Short Channel - 500mm	E600 & F900*	500	600	1190	1129	300	30	30	30000	37
S12555	150mm UltraSlot Shallow Invert Short Channel - 500mm	D400	500	150	311	269	104	30	30	30000	10

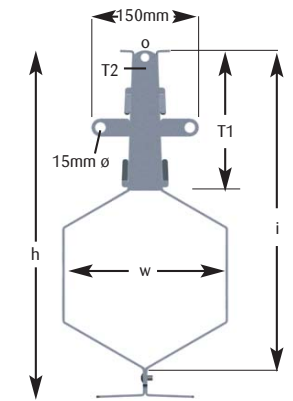


*Concrete reinforcement is required to achieve E600 & F900 loading on UltraSlot 500 & 600mm Slotdrains only. Details of reinforcement are available upon request. Independent load test certificates are available upon request.



ULTRASLOT SHORT CHANNELS - TREADSAFE All Dimensions in mm.

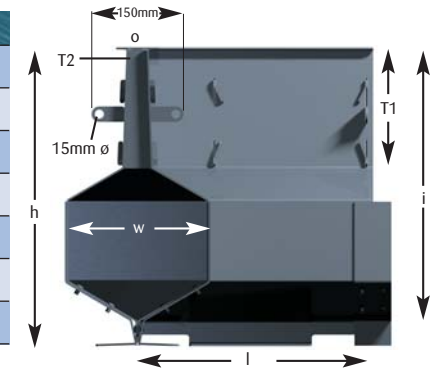
Code	Description	Load Rating	Length	Width (w)	Height (h)	Invert (i)	Throat Depth (T1)	Throat Width (T2)	Slot Orifice (o)	Intake Area/m	Weight Kg
S13555	150mm UltraSlot Treadsafe Short Channel - 500mm	E600 & F900	500	150	406	364	200	30	2 x 9	18000	13
S13560	225mm UltraSlot Treadsafe Short Channel - 500mm	E600 & F900	500	225	492	450	200	30	2 x 9	18000	15
S13565	300mm UltraSlot Treadsafe Short Channel - 500mm	E600 & F900	500	300	702	634	300	30	2 x 9	18000	22
S13570	400mm UltraSlot Treadsafe Short Channel - 500mm	E600 & F900	500	400	810	750	300	30	2 x 9	18000	26
S13575	500mm UltraSlot Treadsafe Short Channel - 500mm	E600 & F900*	500	500	926	866	300	30	2 x 9	18000	31
S13580	600mm UltraSlot Treadsafe Short Channel - 500mm	E600 & F900*	500	600	1190	1129	300	30	2 x 9	18000	38
S12560	150mm UltraSlot Treadsafe Shallow Invert Short Channel - 500mm	D400	500	150	311	269	104	30	2 x 9	18000	11



ULTRASLOT CORNER

All Dimensions in mm.

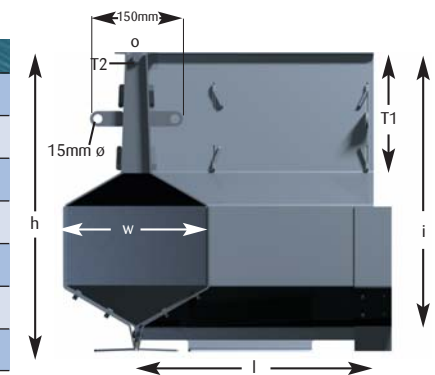
Code	Description	Load Rating	Length (l)	Width (w)	Height (h)	Invert (i)	Throat Depth (T1)	Throat Width (T2)	Slot Orifice (o)	Intake Area/m	Weight Kg
S13905	150mm UltraSlot Corner	E600 & F900	500	150	406	364	200	30	30	30000	24
S13910	225mm UltraSlot Corner	E600 & F900	500	225	492	450	200	30	30	30000	28
S13915	300mm UltraSlot Corner	E600 & F900	500	300	702	634	300	30	30	30000	42
S13920	400mm UltraSlot Corner	E600 & F900	500	400	810	750	300	30	30	30000	50
S13925	500mm UltraSlot Corner	E600 & F900*	500	500	926	866	300	30	30	30000	60
S13930	600mm UltraSlot Corner	E600 & F900*	500	600	1190	1129	300	30	30	30000	74
S12955	150mm UltraSlot Shallow Invert Corner	D400	500	150	311	269	104	30	30	30000	20



ULTRASLOT CORNER - TREADSAFE

All Dimensions in mm.

Code	Description	Load Rating	Length (l)	Width (w)	Height (h)	Invert (i)	Throat Depth (T1)	Throat Width (T2)	Slot Orifice (o)	Intake Area/m	Weight Kg
S13955	150mm UltraSlot Treadsafe Corner	E600 & F900	500	150	406	364	200	30	2 x 9	18000	26
S13960	225mm UltraSlot Treadsafe Corner	E600 & F900	500	225	492	450	200	30	2 x 9	18000	30
S13965	300mm UltraSlot Treadsafe Corner	E600 & F900	500	300	702	634	300	30	2 x 9	18000	44
S13970	400mm UltraSlot Treadsafe Corner	E600 & F900	500	400	810	750	300	30	2 x 9	18000	52
S13975	500mm UltraSlot Treadsafe Corner	E600 & F900*	500	500	926	866	300	30	2 x 9	18000	62
S13980	600mm UltraSlot Treadsafe Corner	E600 & F900*	500	600	1190	1129	300	30	2 x 9	18000	74
S12960	150mm UltraSlot Treadsafe Shallow Invert Corner	D400	500	150	311	269	104	30	2 x 9	18000	22



*Concrete reinforcement is required to achieve E600 & F900 loading on UltraSlot 500 & 600mm Slotdrains only. Details of reinforcement are available upon request. Independent load test certificates are available upon request.

ACCESS, OUTLET & SILT BOXES

SILT BOXES

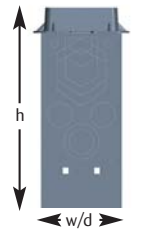
All Dimensions in mm.



Shown with PavéSlot Recessed Cover

Code	Description	Load Rating	Height (h)	Width (w)	Depth (d)	Intake Area	Box Weight Kg	Cover/Grating Weight Kg	Total Weight Kg
S20100	Small Silt Box c/w PavéSlot Recessed Cover	D400	1048	375	375	N/A	36	41	77
S20105	Small Silt Box c/w Grating	D400	1048	375	375	32209	36	54	90
S20110	Small Silt Box c/w Recessed Cover	D400	1048	375	375	N/A	36	41	77
S20115	Large Silt Box c/w Double Triangular Grating	D400	1602	576	576	110000	88	72	160

Note - All silt boxes are supplied complete with a 300mm deep removable silt bucket.



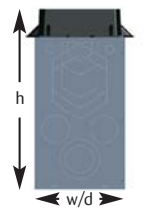
OUTLET BOXES

All Dimensions in mm.



Shown with Recessed Cover

Code	Description	Load Rating	Height (h)	Width (w)	Depth (d)	Intake Area	Box Weight Kg	Cover/Grating Weight Kg	Total Weight Kg
S20200	Small Outlet Box c/w PavéSlot Recessed Cover	D400	748	375	375	N/A	25	41	66
S20205	Small Outlet Box c/w Grating	D400	748	375	375	32209	25	54	79
S20210	Small Outlet Box c/w Recessed Cover	D400	748	375	375	N/A	25	41	66
S20215	Large Outlet Box c/w Double Triangular Grating	D400	1302	576	576	110000	72	72	144



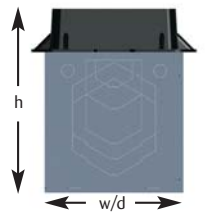
ACCESS POINTS

All Dimensions in mm.



Shown with Grating

Code	Description	Load Rating	Height (h)	Width (w)	Depth (d)	Intake Area	Box Weight Kg	Cover/Grating Weight Kg	Total Weight Kg
S20300	Small Access Point c/w PavéSlot Recessed Cover	D400	498	375	375	N/A	16	41	57
S20305	Small Access Point c/w Grating	D400	498	375	375	32209	16	54	70
S20310	Small Access Point c/w Recessed Cover	D400	498	375	375	N/A	16	41	57
S20315	Large Access Point c/w Double Triangular Grating	D400	802	576	576	110000	45	72	117

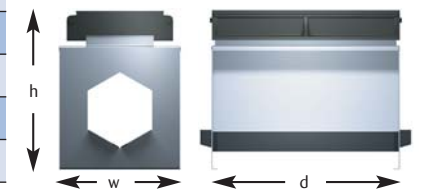


ULTRA HEAVY DUTY ACCESS POINTS

All Dimensions in mm.

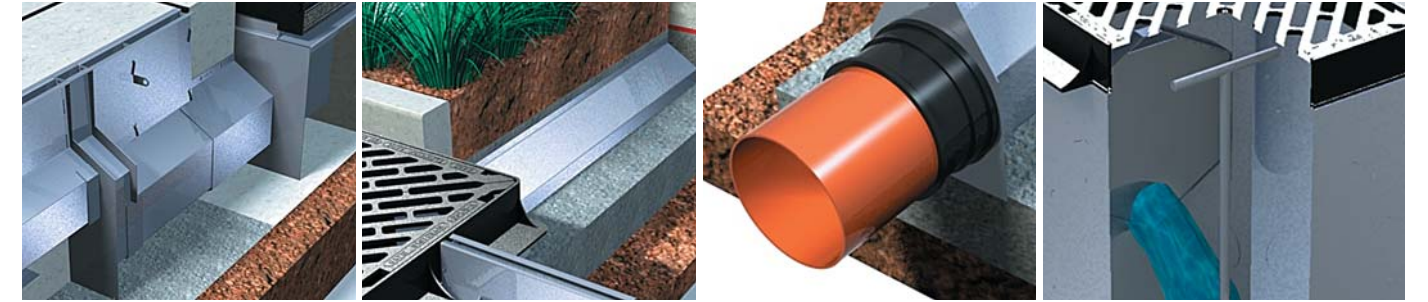


Code	Description	Load Rating	Height (h)	Width (w)	Depth (d)	Intake Area	Box Weight Kg	Cover/Grating Weight Kg	Total Weight Kg
S30310	Access Point to suit 150mm UltraSlot	F900	465	546	841	185053	25	146	171
S30315	Access Point to suit 225mm UltraSlot	F900	550	546	841	185053	30	146	176
S30325	Access Point to suit 300mm UltraSlot	F900	735	546	841	185053	40	146	186
S30335	Access Point to suit 400mm UltraSlot	F900	850	696	841	265533	50	187	237
S30345	Access Point to suit 500mm UltraSlot*	F900	970	846	841	350000	60	227	287
S30350	Access Point to suit 600mm UltraSlot*	F900	1230	846	841	350000	75	227	302



*These items can be used for PavéSlot and UniSlot channels of the same size.

A comprehensive range of standard accessories is available to suit all types and sizes of Gatic Slotdrain. Bespoke fittings are available upon request.

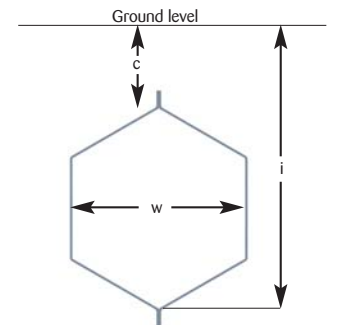


ACCESSORIES

UNIVERSAL CHANNEL PIPES

All Dimensions in mm.

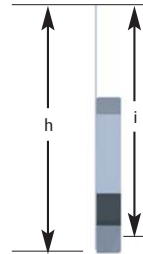
Code	Description	Load Rating	Length	Width (w)	Invert (i)	Depth to Crown (c)	Weight Kg
S14305	100mm Slotdrain Channel Pipe - 3m	As Slotdrain Type	3000	100	As Appropriate Slotdrain Type	See Relevant Throat Depth	16
S14310	150mm Slotdrain Channel Pipe - 3m	As Slotdrain Type	3000	150	As Appropriate Slotdrain Type	See Relevant Throat Depth	22
S14315	225mm Slotdrain Channel Pipe - 3m	As Slotdrain Type	3000	225	As Appropriate Slotdrain Type	See Relevant Throat Depth	31
S14320	300mm Slotdrain Channel Pipe - 3m	As Slotdrain Type	3000	300	As Appropriate Slotdrain Type	See Relevant Throat Depth	40
S14325	400mm Slotdrain Channel Pipe - 3m	As Slotdrain Type	3000	400	As Appropriate Slotdrain Type	See Relevant Throat Depth	52
S14330	500mm Slotdrain Channel Pipe - 3m	As Slotdrain Type	3000	500	As Appropriate Slotdrain Type	See Relevant Throat Depth	64
S14335	600mm Slotdrain Channel Pipe - 3m	As Slotdrain Type	3000	600	As Appropriate Slotdrain Type	See Relevant Throat Depth	87



END CAPS - TO SUIT PAVESLOT & UNISLOT SYSTEMS

All Dimensions in mm.

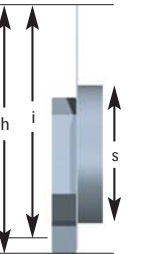
Code	Description	To suit channel Width	Height (h)	Invert (i)	Weight Kg
S42100	End Cap 100x100	100	252	211	2
S42105	End Cap 150x100	150	311	269	3
S42110	End Cap 225x150	225	445	404	4
S42115	End Cap 300x150	300	558	490	5
S42120	End Cap 400x150	400	666	606	6
S42125	End Cap 500x300	500	929	869	7
S42130	End Cap 600x300	600	1193	1133	8



END CAP OUTLETS - TO SUIT PAVESLOT & UNISLOT SYSTEMS

All Dimensions in mm.

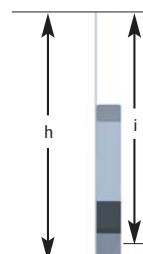
Code	Description	Spigot o/d (s)	To suit channel Width	Height (h)	Invert (i)	Weight Kg
S42200	End Cap Outlet 100x100	110 outlet	100	252	211	3
S42205	End Cap Outlet 150x100	160 outlet	150	311	269	4
S42210	End Cap Outlet 225x150	200 outlet	225	445	404	5
S42215	End Cap Outlet 300x150	300 outlet	300	558	490	6
S42220	End Cap Outlet 400x150	400 outlet	400	666	606	7



END CAPS - TO SUIT ULTRASLOT SYSTEM

All Dimensions in mm.

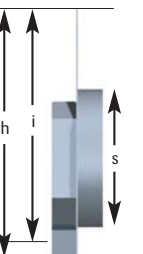
Code	Description	To suit channel Width	Height (h)	Invert (i)	Weight Kg
S43105	UltraSlot End Cap 150x200	150	406	364	3
S43110	UltraSlot End Cap 225x200	225	492	450	4
S43120	UltraSlot End Cap 300x300	300	702	634	5
S43130	UltraSlot End Cap 400x300	400	810	750	6
S43140	UltraSlot End Cap 500x300	500	926	866	7
S43145	UltraSlot End Cap 600x300	600	1190	1129	8
S42135	UltraSlot End Cap 150x100 - Shallow Invert	150	311	269	2



END CAPS OUTLETS - TO SUIT ULTRASLOT SYSTEM

All Dimensions in mm.

Code	Description	Spigot o/d (s)	To suit channel Width	Height (h)	Invert (i)	Weight Kg
S43200	UltraSlot End Cap Outlet 150x200	160 outlet	150	406	364	4
S43205	UltraSlot End Cap Outlet 225x200	200 outlet	225	492	450	5
S43210	UltraSlot End Cap Outlet 300x300	300 outlet	300	702	634	6
S43215	UltraSlot End Cap Outlet 400x300	400 outlet	400	810	750	7
S42225	UltraSlot End Cap Outlet 150x100 Shallow Invert	160 outlet	150	311	269	3

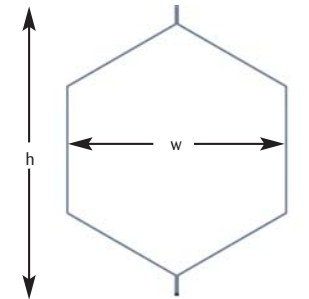


UNIVERSAL CATCH PIT CONNECTORS - TO SUIT ALL SLOTDRAIN SYSTEMS

All Dimensions in mm.

To suit channel

Code	Description	Width (w)	Invert	Length	Effective Length	Height (h)	Weight Kg
S40305	150mm Catchpit Connector	150	As Slotdrain	375	300	196	4
S40310	225mm Catchpit Connector	225	As Slotdrain	375	300	271	5
S40320	300mm Catchpit Connector	300	As Slotdrain	375	300	346	6
S40330	400mm Catchpit Connector	400	As Slotdrain	375	300	446	7
S40340	500mm Catchpit Connector	500	As Slotdrain	375	300	556	8
S40345	600mm Catchpit Connector	600	As Slotdrain	375	300	646	11



DROP CONNECTORS - TO SUIT PAVESLOT & UNISLOT SYSTEMS

All Dimensions in mm.

To Enlarge

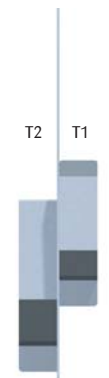
From Channel

To Channel

Code	Description	Type	Width	Throat Depth (T1)	Width	Throat Depth (T2)	Weight Kg
S42400	Drop Connector 100 - 150	1	100	100	150	100	2
S41400	Drop Connector 150 - 225 PaveSlot only	2	150	100	225	150	6
S42405	Drop Connector 150 - 225 UniSlot only	2	150	100	225	150	6
S42410	Drop Connector 225 - 300	1	225	150	300	150	4
S42415	Drop Connector 300 - 400	1	300	150	400	150	5
S41405	Drop Connector 400 - 500 PaveSlot only	2	400	150	500	300	13
S42420	Drop Connector 400 - 500 UniSlot only	2	400	150	500	300	13
S42425	Drop Connector 500 - 600	1	500	300	600	300	11



Illustration shows Type 1



DROP CONNECTORS - TO SUIT ULTRASLOT SYSTEM

All Dimensions in mm.

To Enlarge

From Channel

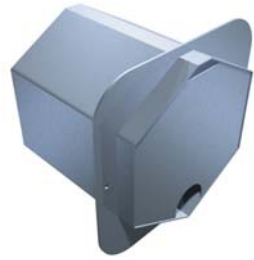
To Channel

Code	Description	Type	Width	Throat Depth (T1)	Width	Throat Depth (T2)	Weight Kg
S43400	UltraSlot Drop Connector 150 - 225	1	150	200	225	200	4
S43405	UltraSlot Drop Connector 225 - 300 (Non-Treadsafe)	2	225	200	300	300	11
S43406	UltraSlot Treadsafe Drop Connector 225 - 300 (Treadsafe)	2	225	200	300	300	11
S43410	UltraSlot Drop Connector 300 - 400	1	300	300	400	300	7
S43415	UltraSlot Drop Connector 400 - 500	1	400	300	500	300	9
S43420	UltraSlot Drop Connector 500 - 600	1	500	300	600	300	11



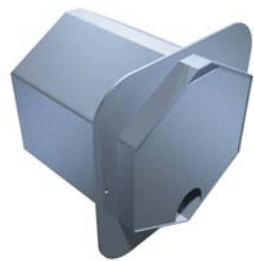
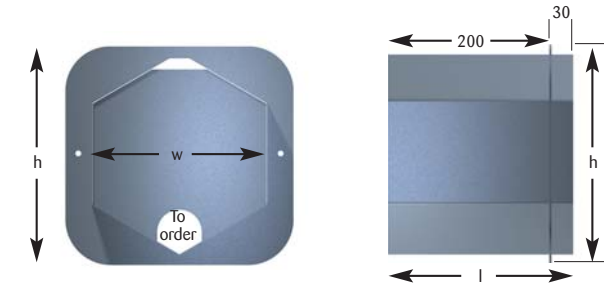
Illustration shows Type 2





FLOW REGULATORS
FOR USE WITH GATIC PRE-FORMED OUTLET/SILT UNITS All Dimensions in mm.

Code	Description	Length (l)	Width (w)	Height (h)	Invert	Weight Kg
S40500	225mm Flow Regulator - NB Outlet Size To Order	230	225	342	As Slotdrain	7
S40505	300mm Flow Regulator - NB Outlet Size To Order	230	300	427	As Slotdrain	10
S40510	400mm Flow Regulator - NB Outlet Size To Order	230	400	545	As Slotdrain	13



FLOW REGULATORS
FOR USE WITH CONSTRUCTED CATCH PITS All Dimensions in mm.

Code	Description	Length (l)	Width (w)	Height (h)	Invert	Weight Kg
S40515	225mm Flow Regulator - NB Outlet Size To Order	230	225	368	As Slotdrain	7
S40520	300mm Flow Regulator - NB Outlet Size To Order	230	300	454	As Slotdrain	10
S40525	400mm Flow Regulator - NB Outlet Size To Order	230	400	569	As Slotdrain	13
S42030	500mm Flow Regulator - NB Outlet Size To Order	230	500	685	As Slotdrain	16
S42035	600mm Flow Regulator - NB Outlet Size To Order	230	600	950	As Slotdrain	19

